

Part G T800-28-0X00 Paging Rack Frame

This part of the manual is divided into the sections listed below. These sections provide some brief information on the T800-28-0X00 paging rack frame and its associated backplane PCB, the T800-55-0000.

Section	Title	Page
1	T800-28-0X00 General Information	1.1
2	T800-55-0000 Backplane PCB	2.1

Figure	Title	Page
2.1	T800-55-0000 PL1 Wiring	2.2
2.2	T800-55-0000 PCB Layout - Top Side (Outer)	2.3
2.3	T800-55-0000 PCB Layout - Bottom Side (Inner)	2.4
2.4	T800-55-0000 Circuit Diagram	2.5

1 T800-28-0X00 General Information

The T800-28-0X00 is a single channel rack frame with a maximum output of 100W and provision for a high stability oscillator to enable the paging function, as described below:

Operational Characteristics	<ul style="list-style-type: none"> • single channel - paging • up to 100W RF output • speaker/programming panel • high stability oscillator • DC line fuse • earth stud • backplane PCB interface
Power Supply Options	<ul style="list-style-type: none"> • T800-28-0000 AC only • T800-28-0100 external DC only • T800-28-0200 AC and external DC • T800-28-0300 AC and battery • T800-28-0400 external DC and battery • T800-28-0500 AC and external DC and battery
Configuration Options	<ul style="list-style-type: none"> • duplexer • coaxial relay • fans - single or double • interfaces to TA703-00-XXXX changeover module using TA703-11-0010 installation kit • microphone • DC converter
Mechanical Specifications	<ul style="list-style-type: none"> • 5U x 483mm (19") to house up to seven modules • height 222mm • width 482mm • depth 322mm plus 50mm clearance space • weight 25W - 12.75kg 50W - 16.5kg 100W - 16.85kg

2 T800-55-0000 Backplane PCB

The T800-55-0000 paging backplane PCB is designed for use in the T800-28-0X00 paging rack frame. The PCB mounts across the rear panel of the T800-41-0003 triple module rack frame guide, and has provision for the following modules:

- high stability oscillator
- repeater/link receiver (optional)
- paging exciter/transmitter (25, 50 or 100W).

These modules plug directly into the D-range sockets provided on the inner side of the PCB (both D-range 1 and D-range 2 are provided for). The other side of the PCB features:

- a programming port
- two DIP switches for external channel selection
- one 25-way OEM D-range connector (refer to Figure 2.1)
- one 11-way D-range connector with provision for an external frequency reference.

The T800-55-0000 also allows the fitting of an optional link transmitter/repeater, but will not accept personality PCBs.

Pin	Function
1	Rx line 1
2	Rx aux 2
3	Rx aux 1
4	Rx line 4
5	Tx line 1
6	POCSAG data
7	lock detect
8	Tx line 4
9	signal strength (RSSI)
10	speaker +ve
11	Tx tone input
12	reverse power alarm
13	0V
14	Rx gate
15	Tx key
16	Rx relay common
17	Rx relay normally open
18	Rx inhibit
19	Data/speech (mode select)
20	opto key +
21	opto key -
22	forward power alarm
23	
24	Rx audio 1
25	13.8V (fused)

Figure 2.1 T800-55-0000 PL1 Wiring

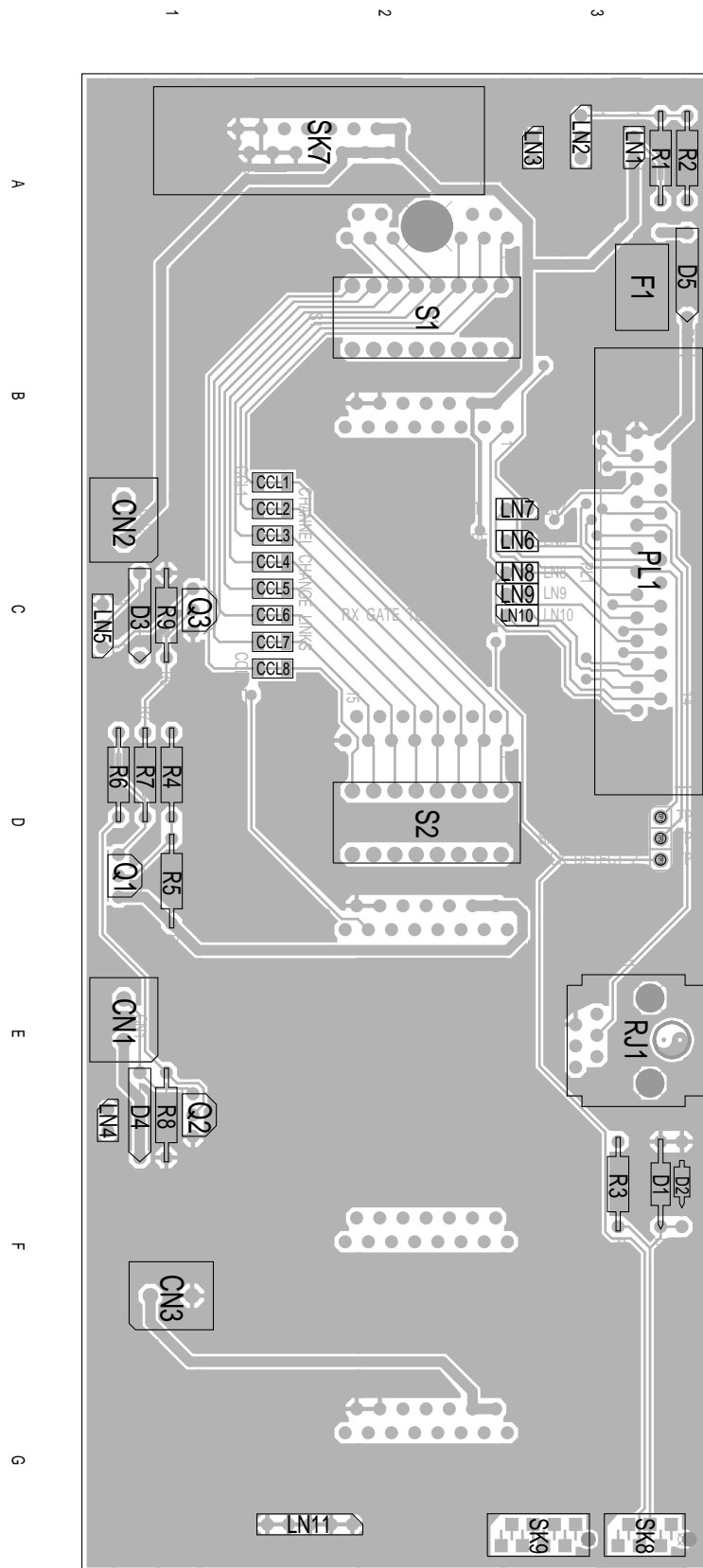


Figure 2.2 T800-55-0000 PCB Layout - Top Side (Outer)

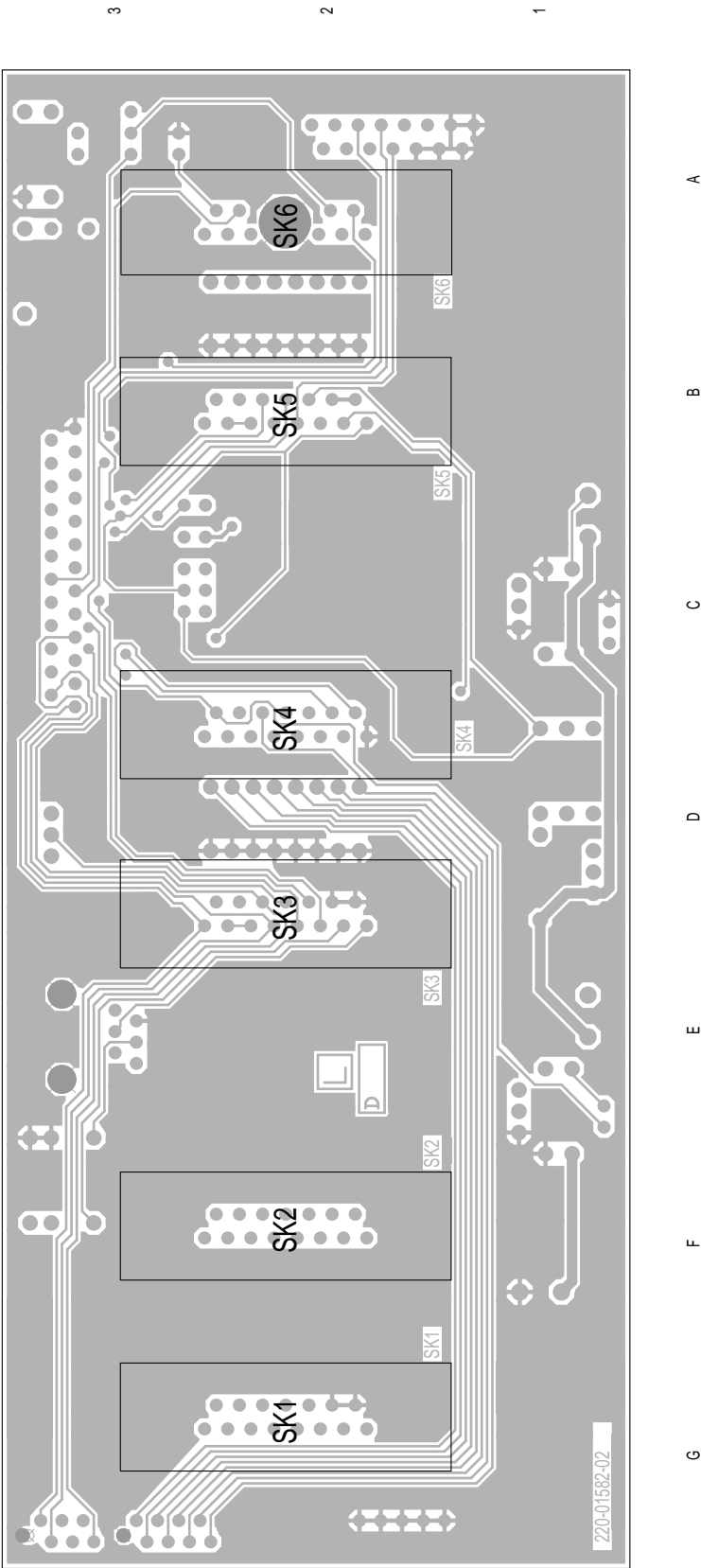


Figure 2.3 T800-55-0000 PCB Layout - Bottom Side (Inner)